

K I M O



KOMMUNENES INTERNASJONALE
MILJØORGANISASJON



Mr Ronny Nielsen
Municipality of Ystad

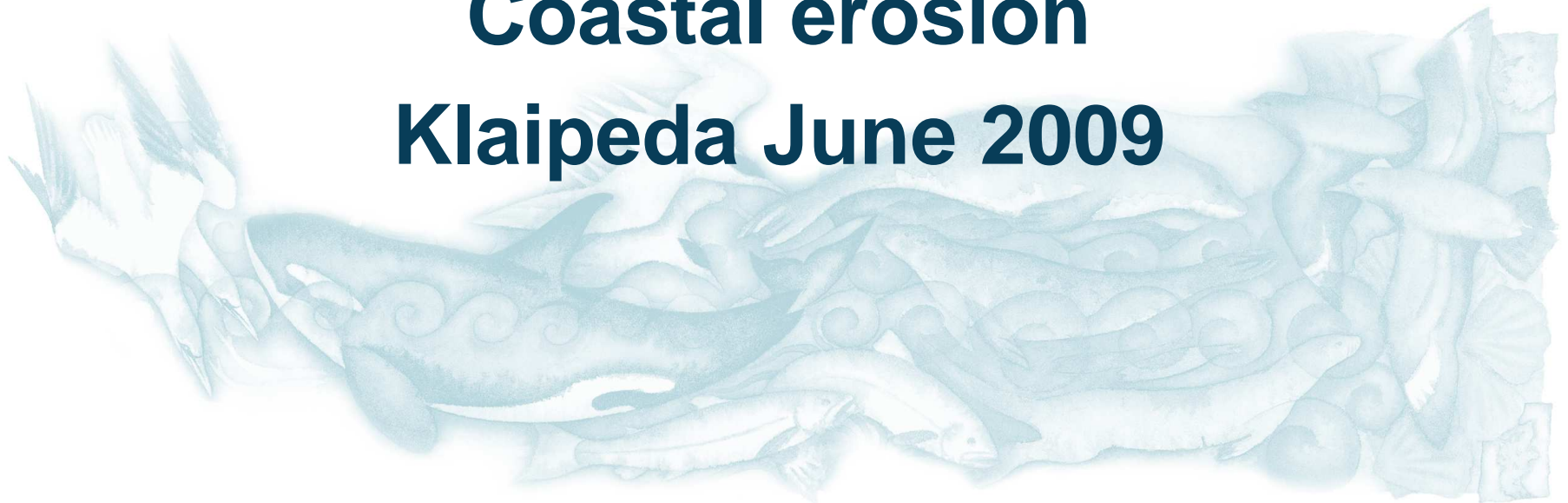
A **Growing** CONCERN 

Your local government voice
on marine pollution



KOMMUNENES INTERNASJONALE
MILJØORGANISASJON

Coastal erosion Klaipeda June 2009



A **Growing** CONCERN


Your local government voice
on marine pollution

- ~ In a lot of coastal municipalities in the south of Sweden there are different problems concerning erosion around the areas facing the Baltic Sea.
- ~ The problems vary among the municipalities, but the experience is very disturbing due to uncertainties in the law, where sometimes the rules are contradictory and also a hindernis for a positive development of the coastal areas in a municipality.

- ~ EU's Baltic Sea programme Interreg IV B stresses within No 3 the importance of the cooperation of states, regions and municipalities in order to solve these problems.
- ~ The problems described above are in principle similar in the coastal areas in Germany, Poland, Lithuania, Latvia and Estonia.



KOMMUNENES INTERNASJONALE
MILJØORGANISASJON

- ~ One natural, important part of the Baltic Sea Strategy concerns the Baltic Sea as sea with its coastal zones. The strategy will most probably be approved of and passed during the council meeting in October this year, when Sweden has the presidency. In the action plan one of the goals is to get 50 "flagship projects", which will direct the future Baltic Sea work.



KOMMUNENES INTERNASJONALE
MILJØORGANISASJON

- ~ Our actual project deals with a **preliminary study** which we have applied for. The municipality of Ystad and some other Swedish coastal municipalities will investigate the possibility to find sustainable solutions of the erosion problem by developing partnership with some other EU-countries having similar problems. Also there is the hope of being better prepared for possible climate changes, which may make the situation still worse.

- ~ **The most important effect of the preliminary study is to make it clear that the above problems cannot be solved by one single municipality, but must be dealt with in cooperation across national borders.**

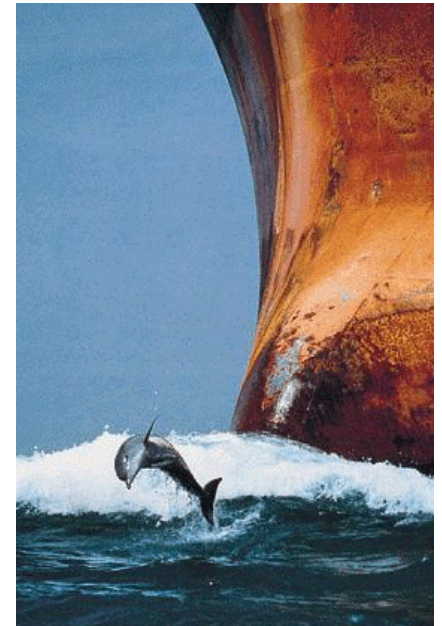
- ~ Unofficial start of the project is June, 2009, at KIMO Baltic Sea meeting in Klaipeda
- ~ Start at the end of August 2009
- ~ September: Analysis and progress report (participating municipalities and investigation of problems, among others law issues.
- ~ October: Staff involved and responsible meet representatives of municipalities in other countries (twice)

- ~ November: Summary of wishes from the municipalities that want to cooperate in the future project.
- ~ December: Final conference in Ystad where possible partners of the EU-project participate. Experts inform about different possibilities and conclusions emerging from the preliminary study. Work has begun on applying for EU-funding.

K I M O



KOMMUNENES INTERNASJONALE
MILJØORGANISASJON



www.kimobaltic.eu

A **Growing** CONCERN 

Your local government voice
on marine pollution